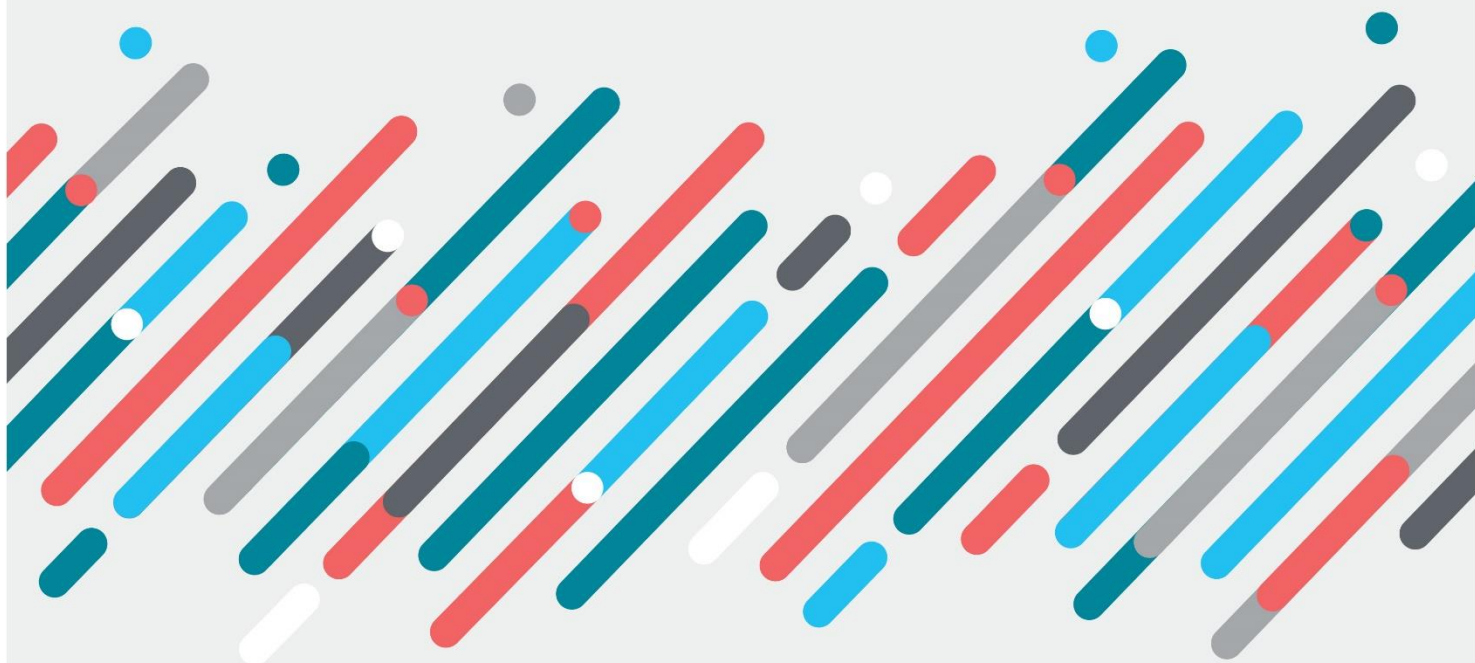




Australian Government
Department of Education

The Draft Final National Digital Research Infrastructure (NDRI) Investment Plan: Recommendations for Investment by the NDRI Working Group

Preview



Introduction

The Draft Final National Digital Research Infrastructure (NDRI) Investment Plan: Recommendations for Investment by the NDRI Working Group Feedback Survey

Welcome to the [Draft Final NDRI Investment Plan: Recommendations for Investment by the NDRI Working Group](#) Feedback Survey.

The NDRI Investment Plan is being developed to implement the [NDRI Strategy](#).

This document represents draft recommendations for investment from the NDRI Working Group. It outlines priority areas for specific investment with indicative amounts of financial investment.

These recommendations are a product from various stakeholder consultations. These include the series of [Targeted Discussions](#) in addition to the NDRI Investment Plan Consultation Survey and Environment Scan.

- Please note, the NDRI Investment Plan Consultation Survey submissions have since been summarised, with these summaries made available on the [Department of Education's NDRI webpage](#).

This document represents current draft advice from the NDRI Working Group. Final recommendations will be provided to the Department of Education. Investment decisions will be made by the Minister for Education, following a grant process to be administered by the Department of Education.

All final investment decisions are subject to Ministerial approval, following assessments by the Department of Education. The finalised NDRI Investment Plan will contain the exact dollar amounts and recipients for investment.

This survey aims to seek feedback from Australia's NDRI stakeholders on these draft recommendations. To provide feedback, you must fill in the survey – we may not consider information sent through any other mechanism.

You may answer as many or as few questions as you wish. If you leave the page and return on the same device, your answers will be saved.

This survey will close on Tuesday 07 January 2025 at 5:00pm AEDT – early submissions are encouraged.

Privacy

Information collected through this survey will be used to inform the NDRI Investment Plan. Your personal information is protected by law, including the Privacy Act 1988.

Personal information is information or an opinion about an identified or reasonably identifiable individual. Personal information includes an individual's name, contact details, feedback or opinions.

Your personal information is collected by the department.

Please do not provide personal information about any other individual unless you have their consent.

Your personal information is collected by the department under the Privacy Act 1988 for the purposes of policy development and related purposes such as:

- research
- evaluation
- analysis.

Your personal information may also be used for other purposes where you have agreed, or where it is otherwise permitted under the Privacy Act.

If you do not provide some or all of the personal information requested, the department may not be able to follow up with your survey response.

Your personal information may be disclosed to third parties, including but not limited to:

- other Commonwealth agencies for the purpose of policy development, evaluation and analysis
- contracted service providers for the purpose of policy development, evaluation and analysis.

Your personal information is unlikely to be disclosed to overseas recipients.

The department's Privacy Policy contains more information about how the department will manage your personal information, including information about how to make a complaint and seek access to and correction of your personal information.

To contact the department about your personal information, contact privacy@education.gov.au.

To contact the department about NDRI specific enquiries, contact researchinfrastructure@education.gov.au.

By checking the box below, you confirm that you have read and understood this privacy statement and agree to the department's handling of your personal information in accordance with this privacy statement.

(required)

- I agree

Questions

What is your full name?

What organisation are you from?

What is your role at your organisation?

What research community are you from?

- Health
- Environment
- Characterisation
- Manufacturing
- Humanities
- Social Sciences
- Galleries, Libraries, Archives and Museums
- Aboriginal and Torres Strait Islander Peoples Knowledge and Research
- Astronomy
- Physics
- Other research community or communities
- Not part of the research community

If you would like to receive updates on the NDRI Investment Plan process, please enter your email below:

Please provide your responses below.

Q1. Do the proposed levels of investment for the different outcomes and the outcome-specific investment areas seem appropriately balanced? Max 1200 characters.

Q2. Are there critical NDRI investments missing from the recommendations listed? If so, briefly explain. Max 1200 characters.

Q3. Please provide any additional comments that you may have related to the Draft Final NDRI Investment Plan: Recommendations for Investment by the NDRI Working Group. Max 1200 characters.

Clicking submit will conclude your survey. Please carefully review your comments and only click submit once your responses have been finalised.

