



Child care in COVID-19

Summary of August services survey results

We invited all approved child care services (13,353) to participate in an online survey about the Transition Package. 4,717 services from different service types across all states and territories completed the survey between 31 July and 6 August 2020.

Viability

We asked services how the Transition Package was helping them.

- 94% reported it was helping them stay open.
- 95% reported it was helping them remain financially viable.
- 93% reported it was helping them retain staff.

We asked services about capacity, relative to their number of approved places, in the week 20 – 26 July 2020.

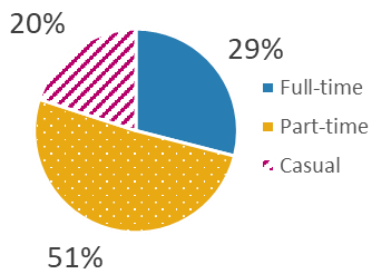
- 12% reported they were running close to or at full capacity (typically 90 to 100% full).
- 19% reported they were running slightly below capacity (typically 80 to 90% full).
- 37% reported they were typically running between 50 to 80% of capacity.
- 33% reported they were typically running at less than 50% of capacity.

Educators

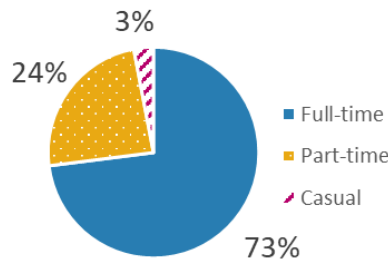
We asked services about the employment type of their educators. Overall, they reported that:

- 29% were employed full-time,
- 47% were employed part-time, and
- 24% were employed on a casual basis.

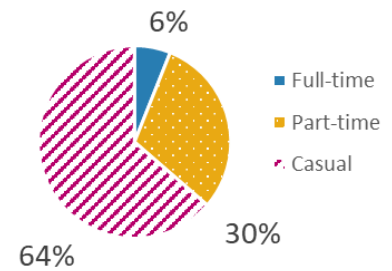
Centre Based Day Care



Family Day Care



Outside School Hours Care

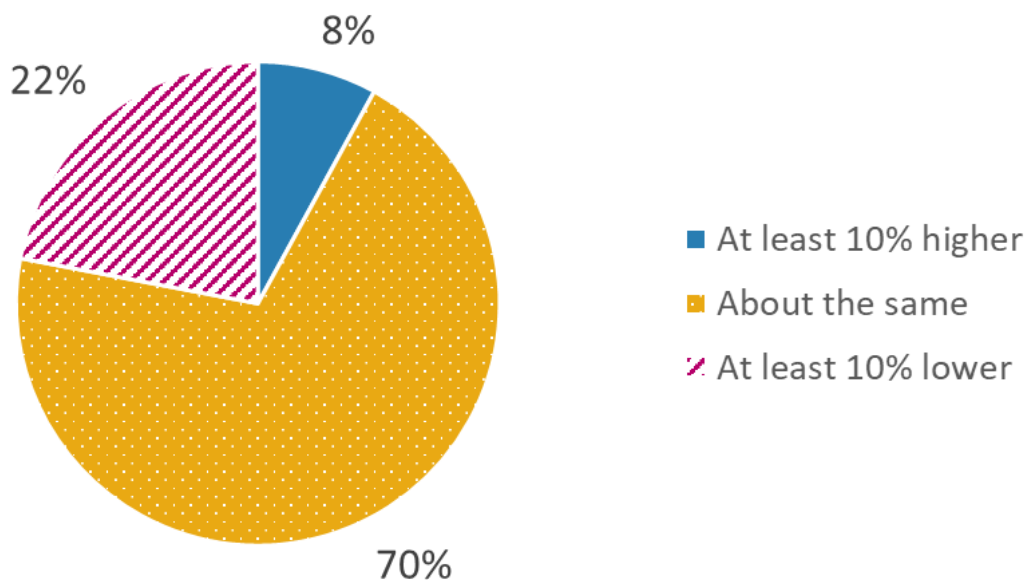


The above graphs show the breakdown of educators by service type. Within Centre Based Day Care, 29% are full-time, 51% part-time, and 20% are casual. Within Family Day Care, 73% are full-time, 24% are part-time, and 3% are casual. Within Outside School Hours Care, 6% are full-time, 30% are part-time, and 64% are casual.

	Centre Based Day Care	Family Day Care	Outside School Hours Care
Full-time	29%	73%	6%
Part-time	51%	24%	30%
Casual	20%	3%	63%

We asked services how the total number of educators at their service on 20 July 2020 compared to pre-COVID-19 levels. Most services reported that their educator levels remained the same.

Educators

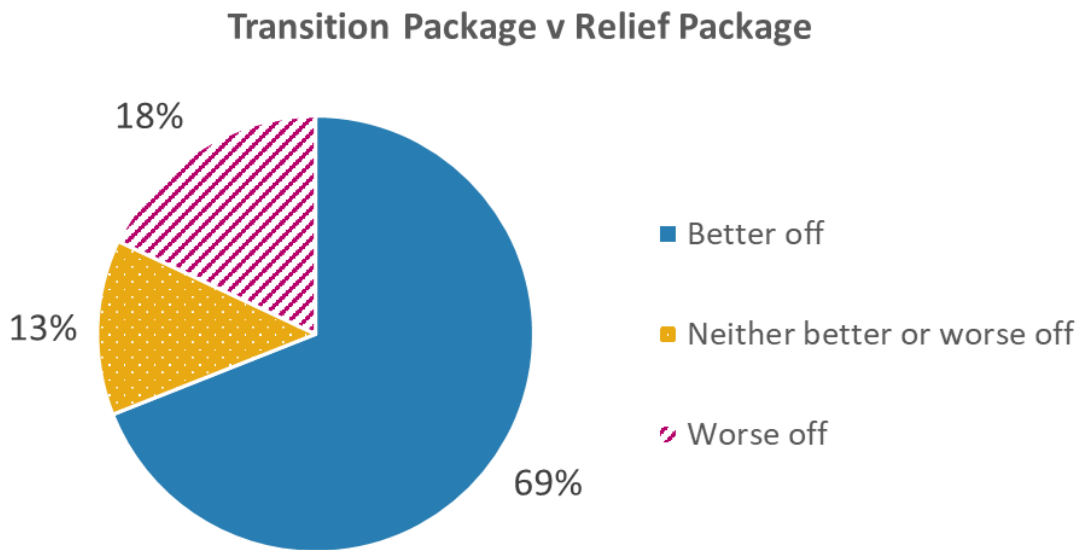


The above graph shows how educator levels in July compared with pre-COVID levels. 8% of services reported their educator levels were at least 10% higher, 70% reported they had about the same, and 22% reported they were at least 10% lower.

Number of educators compared to pre-COVID	Percentage of services
At least 10% higher	8%
About the same	70%
At least 10% lower	22%

Relief Package

We asked services whether they were better or worse off under the Transition Package, compared to the initial Relief Package. 69% of services reported they were better off under the Transition Package.



The above graph shows whether services felt more supported under the Transition Package or the initial Relief Package. 69% of services reported they were better off under the Transition Package, 18% reported they were worse off under the Transition Package, and 13% reported they were about the same.

Better or worse off	Percentage of services
Better off under the Transition Package	69%
Neither better or worse off	13%
Worse off under the Transition Package	18%

Access to care

We asked services how the Transition Package was helping their families to access care.

- 94% reported it was helping them provide care to the children of essential workers, and vulnerable children.
- 91% reported it was helping them keep children enrolled.

Demand for care

We asked services whether they were able to meet demand for care in the week 20 – 26 July 2020.

- Overall, 93% of services reported that they were able to provide all the care that families asked for.

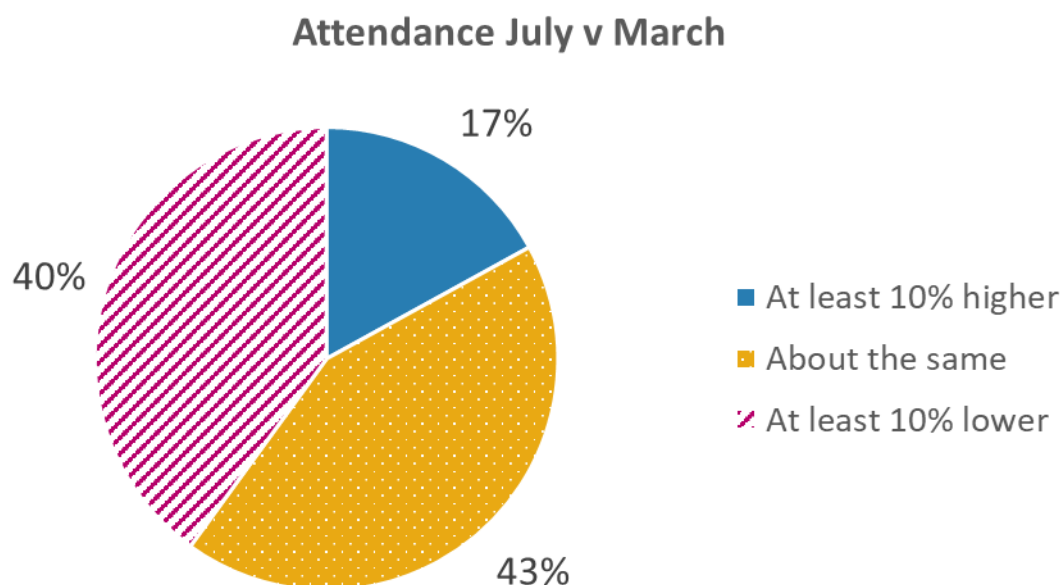
We asked the services that could not meet demand in the week 20 – 26 July 2020 why they couldn't. The most common reasons were:

- demand exceeded approved places on some days (4.2% of all services), and
- they did not have enough educators (3.6% of all services), usually because they were unable to find suitable educators.

Attendance

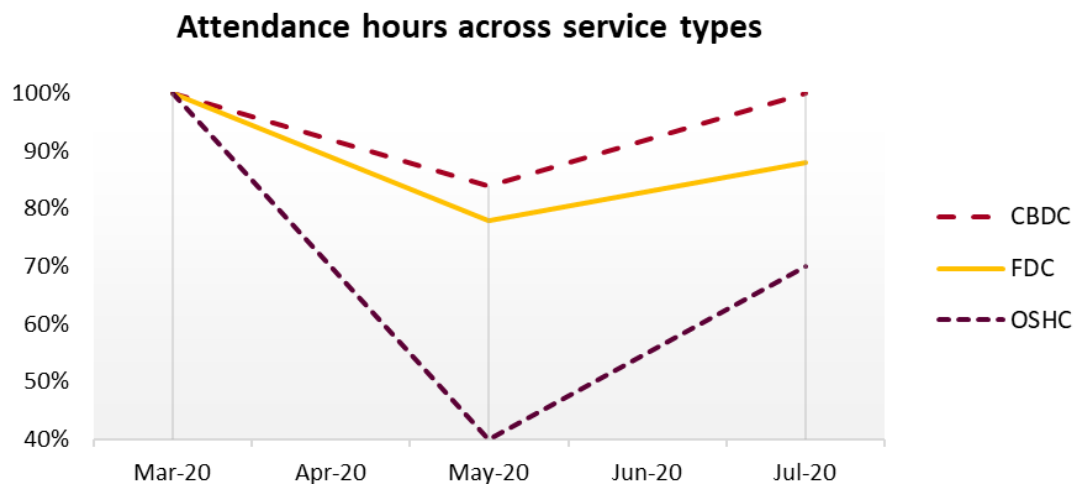
We asked services about attendance in the week 20 – 26 July 2020.

- 60% reported their attendance had increased or remained the same, compared to pre-COVID levels.
- When compared to previous surveys, attendance hours were back to 96% of their pre-COVID levels, a significant improvement on 79% in May.



The above graph compares attendance in July and March 2020. 17% of services reported attendance was at least 10% higher in July, 43% reported it was about the same, and 40% reported it was at least 10% lower.

Attendance in July (compared to March)	Percentage of services
At least 10% higher	17%
About the same	43%
At least 10% lower	40%



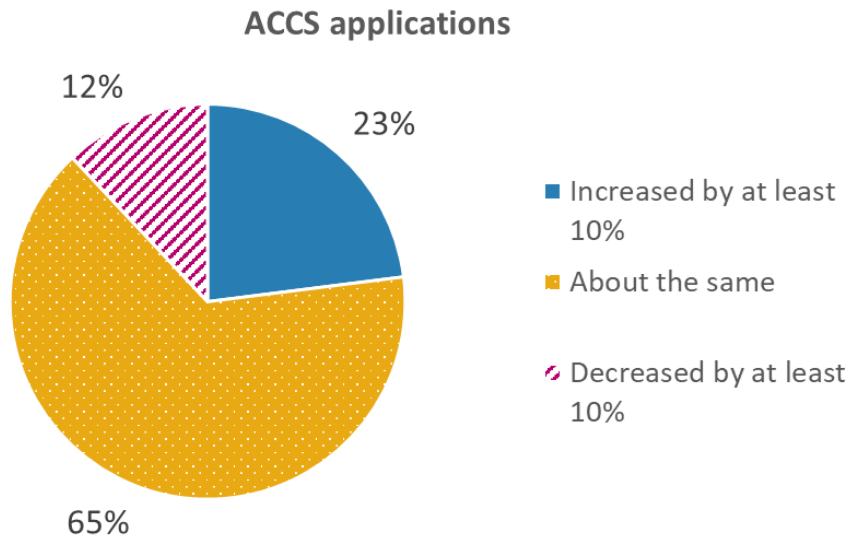
The above graph shows attendance levels between March and July 2020. Attendance at Centre Based Day Care Services fell to 84% in mid-May and was back at 100% by the end of July. Attendance at Family Day Care services fell to 78% in mid-May and reached 88% by the end of July. Attendance at Outside School Hours Care fell to 40% in mid-May and reached 70% by the end of July.

	Centre Based Day Care	Family Day Care	Outside School Hours Care
March 2020 (pre-COVID)	100%	100%	100%
Mid-May	84%	78%	40%
End of July	100%	88%	70%

Vulnerable and disadvantaged families

We asked services about the number of Additional Child Care Subsidy (ACCS) applications from families.

- 23% said applications increased by at least 10% compared to pre-COVID levels.
- Centre Based Day Care saw the greatest increase, with approximately 29% of services reporting an increase of at least 10%.
- Approximately 8% of Outside School Hours Care services reported an increase.



The above graph shows how COVID-19 affected ACCS applications. 23% of services reported an increase in ACCS applications of at least 10%, 65% reported they remained about the same, and 12% of services reported a decreased of at least 10%.

ACCS applications	Percentage of services
Increased by at least 10%	23%
About the same	65%
Decreased by at least 10%	12%

Victoria

We asked services in Victoria about the week 20 – 26 July 2020. Stage 4 lockdowns had not yet been enforced in Victoria.

- Attendance levels in Victoria were at 71% of pre-COVID levels. This was considerably lower than 96% nationally (106% excluding Victoria).
- Approximately 76% of Victorian services reported that their total attendance hours were at least 10% lower than pre-COVID, compared to 40% nationally.
- Approximately 62% of Victorian services reported they were running well below capacity with attendance typically less than 50% of approved places, compared to 33% nationally.
- 94% of Victorian services reported they were able to meet demand, compared to 93% nationally.
- A significantly higher proportion, approximately 39%, of Victorian services reported they were worse off under the Transition Package than the Relief Package, compared to 18% nationally.